

LINCOLN-CONTINENTAL IDENTIFICATION

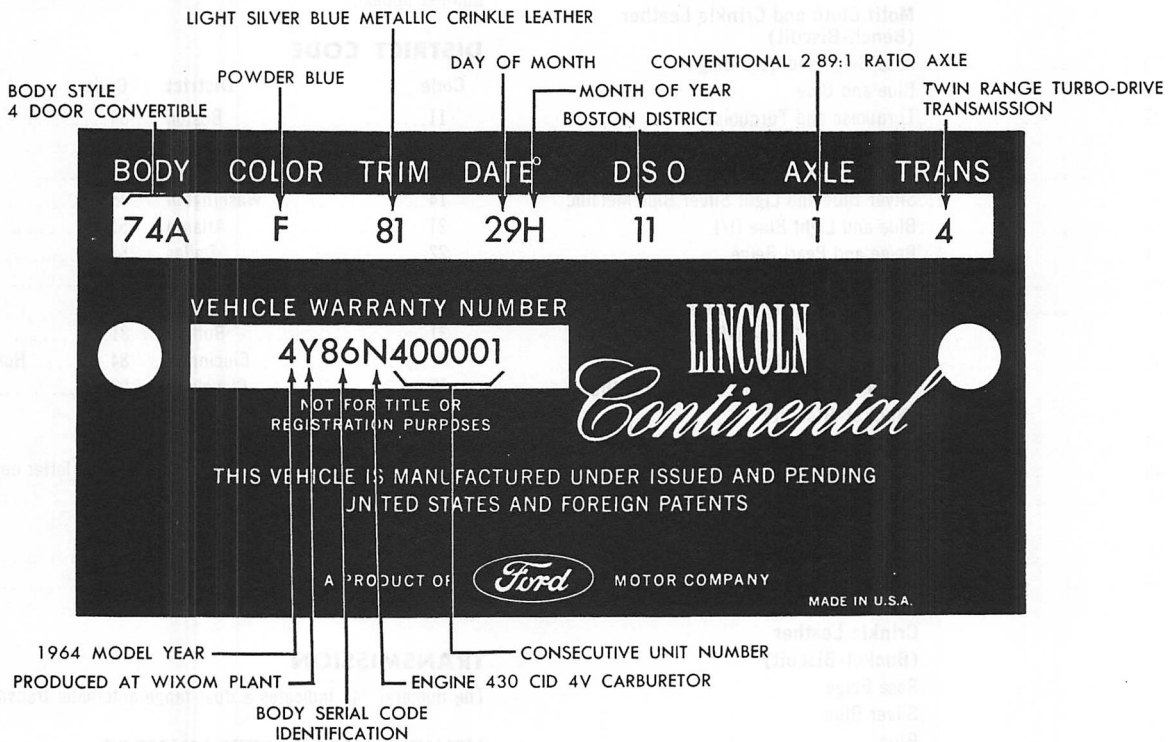


FIG. 1—1964 Lincoln-Continental Warranty Plate

Figure 1 illustrates the 1964 Lincoln-Continental Warranty Plate. The Warranty Plate is located on the rear (lock) face of the left front door.

The official Vehicle Identification Number for title or registration purposes is located on the right front fender apron above the upper suspension arm opening (Fig. 2). Do not use the "Warranty Number" on the Warranty plate for title or registration purposes.

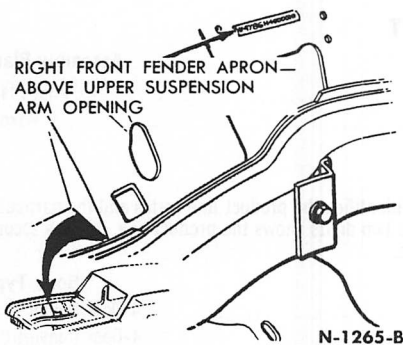


FIG. 2—Vehicle Identification Number Location

VEHICLE DATA

Example (Fig. 1):

(74A W 81 29H 11 1 4)
 74A.....4-Door Convertible
 W.....Rose
 81.....Light Silver Blue Metallic Crinkle Leather

29H.....29th Day August
 11.....Boston District
 1.....2.89:1 Axle Ratio
 4.....Twin Range Turbo-Drive Transmission

BODY

53A.....4-Door Sedan
 74A.....4-Door Convertible

COLOR

Two-tone paint codes use the same symbols as the single colors except that two symbols are used. The lower body color code will appear first in the Warranty Plate Paint Color Space.

If a special paint is used, the paint color space will not be stamped.

Code	*M-30-J Number	Color	Sales Name
A	1724	Black	Black Satin
C	1620	Dark Gray Metallic	Princeton Gray
E	1446	Silver Blue Metallic	Silver Blue
F	1226	Light Blue	Powder Blue
G	1636	Buff	Buckskin
H	1544	Nocturne Blue Metallic	Nocturne Blue
J	1515	Red	Fiesta Red
M	1619	White	Arctic White
N	921	Platinum	Platinum
O	1629	Light Green Metallic	Silver Green
Q	1624	Medium Blue Metallic	Huron Blue
R	1633	Yellow	Encino Yellow
S	1453	Dark Green Metallic	Highlander Green
T	1631	Light Beige Metallic	Desert Sand
U	1070	Med. Turquoise Metallic	Regal Turquoise
W	1555	Pink Metallic	Rose
X	1632	Maroon Metallic	Royal Maroon
Z	1630	Medium Beige Metallic	Silver Sand

*"M-32-J" Acrylic Paint Alternate with "M-30-J"

TRIM

Deviation trim sets will use existing trim codes plus 2 suffix. A trim code with a numeral suffix is not serviced, while a trim code with an alphabetical suffix is serviced.

CODE	TRIM SCHEMES
	Motif Cloth and Crinkle Leather (Bench-Biscuit)
20	Rose Beige and Rose Beige
22	Blue and Blue
27	Turquoise and Turquoise
	(Bench-Pleated)
70	Rose Beige and Light Rose Beige D/L
71	Silver Blue and Light Silver Blue Metallic
72	Blue and Light Blue D/L
74	Beige and Pearl Beige
76	Black and White
77	Turquoise and Light Turquoise D/L
	Broad Cloth (Bench-Pleated)
31	Medium Silver Blue
	Versailles Cloth and Crinkle Leather (Bucket-Biscuit)
44	Beige and Beige
46	Black and Black
51	Silver Blue and Light Silver Blue Metallic
	(Bench-Biscuit)
61	Silver Blue and Light Silver Blue Metallic
64	Beige and Beige
66	Black and Black
	Crinkle Leather (Bucket-Biscuit)
50	Rose Beige
51	Silver Blue
52	Blue
54	Beige
55	Red
56	Black
57	Turquoise
58	Burgundy
59	Palomino
	(Bench-Pleated)
80	Light Rose Beige Metallic
81	Light Silver Blue Metallic
82	Light Blue D/L
84	Pearl Beige
85	Red
86	Black
87	Light Turquoise D/L
88	Burgundy

DATE

The code letters for the month are preceded by a numeral to show the day of the month when the car was completed. The second year code letters are to be used if 1964 model production exceeds 12 months.

Month	First Model Year	Second Model Year
January	A	N
February	B	P
March	C	Q
April	D	R
May	E	S
June	F	T
July	G	U
August	H	V
September	J	W
October	K	X
November	L	Y
December	M	Z

DSO

Domestic Special Orders, Foreign Special Orders, and Pre-Approved Special Orders have the complete order number recorded in this space. Also to appear in this space is the two-digit code number of the District which ordered the unit. If the unit is regular production, only the District code number appears.

DISTRICT CODE

Code	District	Code	District
11	Boston	34	Detroit
12	Philadelphia	41	Chicago
13	New York	44	St. Louis
14	Washington	45	Twin Cities
21	Atlanta	51	Denver
22	Dallas	52	Los Angeles
24	Jacksonville	53	Oakland
25	Memphis	54	Seattle
31	Buffalo	81	Ford of Canada
32	Cincinnati	84	Home Office Reserve
33	Cleveland	90-99	Export

AXLE

A number designates a conventional axle, while a letter designates an Equi-Lock differential.

Code	Ratio
1	2.89:1
3	3.11:1
A	2.89:1

TRANSMISSION

The numeral "4" indicates a dual-range automatic transmission.

VEHICLE WARRANTY NUMBER

Example (Fig. 1): 4Y 86N 400001

4	1964 Model Year
Y	Wixom Assembly Plant
86	4-Door Convertible
N	8-Cylinder 430 Cubic Inch Engine
400001	First Unit Built (Consecutive Unit Number)

MODEL YEAR

The numeral "4" designates 1964

ASSEMBLY PLANT

Code	Assembly Plant
S	Pilot Plant
Y	Wixom

MODEL

The model code number identifies the product line series and the particular body style: the first of the two digits shows the product line, and the second digit shows the body style.

Code	Body Type
82	4-Door Sedan
86	4-Door Convertible

ENGINE

Code	
N	8-Cylinder 430 Cubic Inch 4-V Carburetor
7	8-Cylinder 430 Cubic Inch 4-V Carburetor (Low Compression)

CONSECUTIVE UNIT NUMBER

The assembly plant, with each model year, begins with consecutive unit number 400001 and continues on for each car built.